

PANCHAMUKHI ENCLAVE,
RAGHUNATHPUR, BHUBANESWAR
ODISHA, 751024

EMAIL:-
PROJECT@JASLEENBUILD.COM

MOB: 06742469201,7008434987

JASLEEN BUILD PROJECTS PVT. LTD.

ISO 9001-2015 CERTIFIED COMPANY,

ISO 45001:2018 (OHSMS) CERTIFIED COMPANY ,IRQS

OCCUPATIONAL HEALTH AND SAFETY MANAGEMENT SYSTEM

COMPANY OVERVIEW

Jasleen Build Projects Pvt. Ltd.

Established in 2017, headquartered at Bhubaneswar, Odisha.

Specialized in Railway Operations, Track Maintenance & EPC Projects.

Strong workforce of engineers, supervisors & skilled manpower.

Known for safety, efficiency & timely project delivery.



RAIL TRACK MAINTENANCE

- Regular inspection & preventive maintenance of tracks.
-
- Ensuring track alignment, gauge correction & welding.
-
- Use of modern machinery for precision & durability.
-
- Objective: Safe & uninterrupted train operations.

TRACK LAYING /LINKING WORK



- Regular inspection & preventive maintenance of tracks.
-
- Ensuring track alignment, gauge correction & welding.
-
- Use of modern machinery for precision & durability.
-
- Objective: Safe & uninterrupted train operations.



RAILWAY BRIDGE MAINTENANCE

- Regular inspection & preventive maintenance of tracks.
-
- Ensuring track alignment, gauge correction & welding.
-
- Use of modern machinery for precision & durability.
-
- Objective: Safe & uninterrupted train operations.

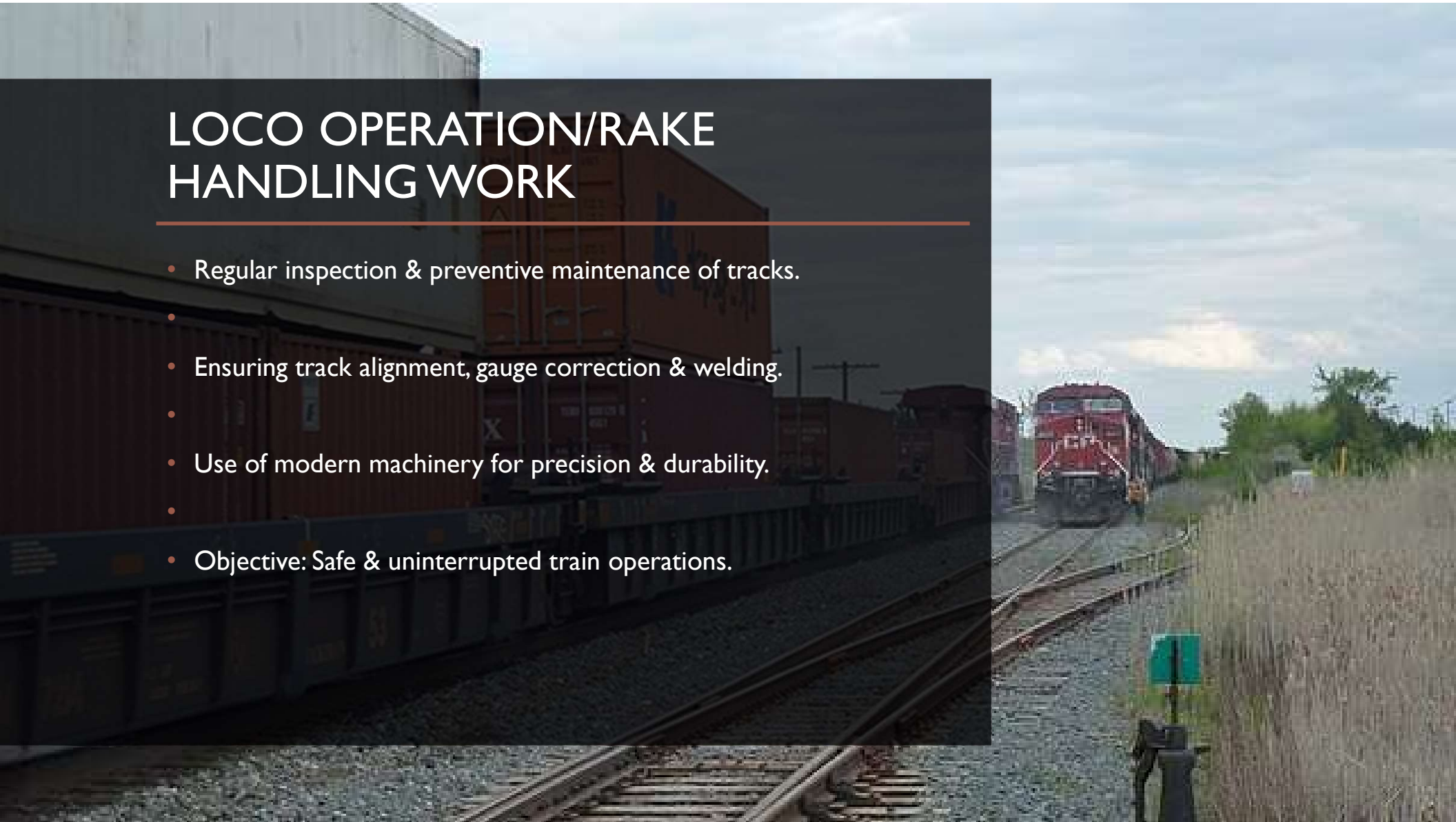


MECHANISED GRASS CUTTING AT RAILWAY YARD

- Regular inspection & preventive maintenance of tracks.
- Ensuring track alignment, gauge correction & welding.
- Use of modern machinery for precision & durability.
- Objective: Safe & uninterrupted train operations.

LOCO OPERATION/RAKE HANDLING WORK

- Regular inspection & preventive maintenance of tracks.
-
- Ensuring track alignment, gauge correction & welding.
-
- Use of modern machinery for precision & durability.
-
- Objective: Safe & uninterrupted train operations.





RAILWAY YARD MANAGEMENT

- Railway yard management encompasses
- the efficient handling of rolling stock within
- a railway yard, including tasks like receiving,
- sorting, storing, and dispatching trains or
- individual railcars.



RAKE LOADING SUPPORT

- Safe & efficient inward and outward rake movement.
-
- Coordination with railway authorities for smooth operations.
-
- Skilled workforce ensuring reduced detention & faster turnaround.
-
- Contributing to seamless logistics flow.

CLIENT DETAILS

- **TATA STEEL LTD. MERAMANDALI ODISHA.**
- **GOPALPUR PORT LTD.**
- **THE DHAMRA PORT COMPANY LIMITED. (ADANI PORT)**
- **GANGAVARAM PORT LTD.**
- **AMBUJA CEMENTS LTD.**
- **ACC LIMITED {ADANI CEMENT}, WADI CEMENT WORKS**
- **METALSA INDIA PRIVATE LIMITED**

A framed sign with the text "THANK YOU" is mounted on a light gray wall. The sign has a black frame and a white background. The text "THANK YOU" is written in a bold, dark gray, sans-serif font. Two thin red horizontal lines are positioned above and below the text. The sign is centered on the wall, and a wooden floor is visible at the bottom of the image.

THANK YOU